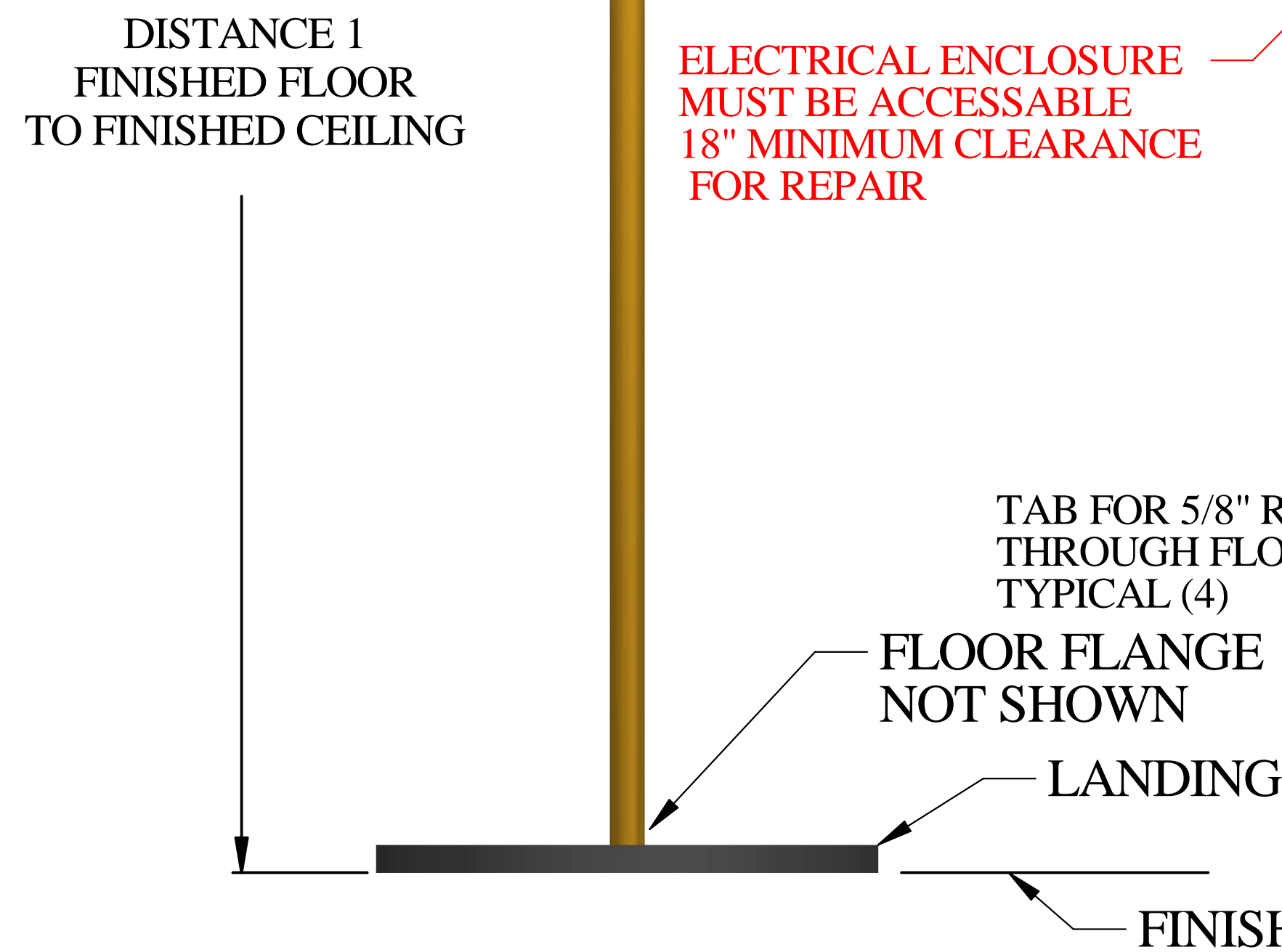
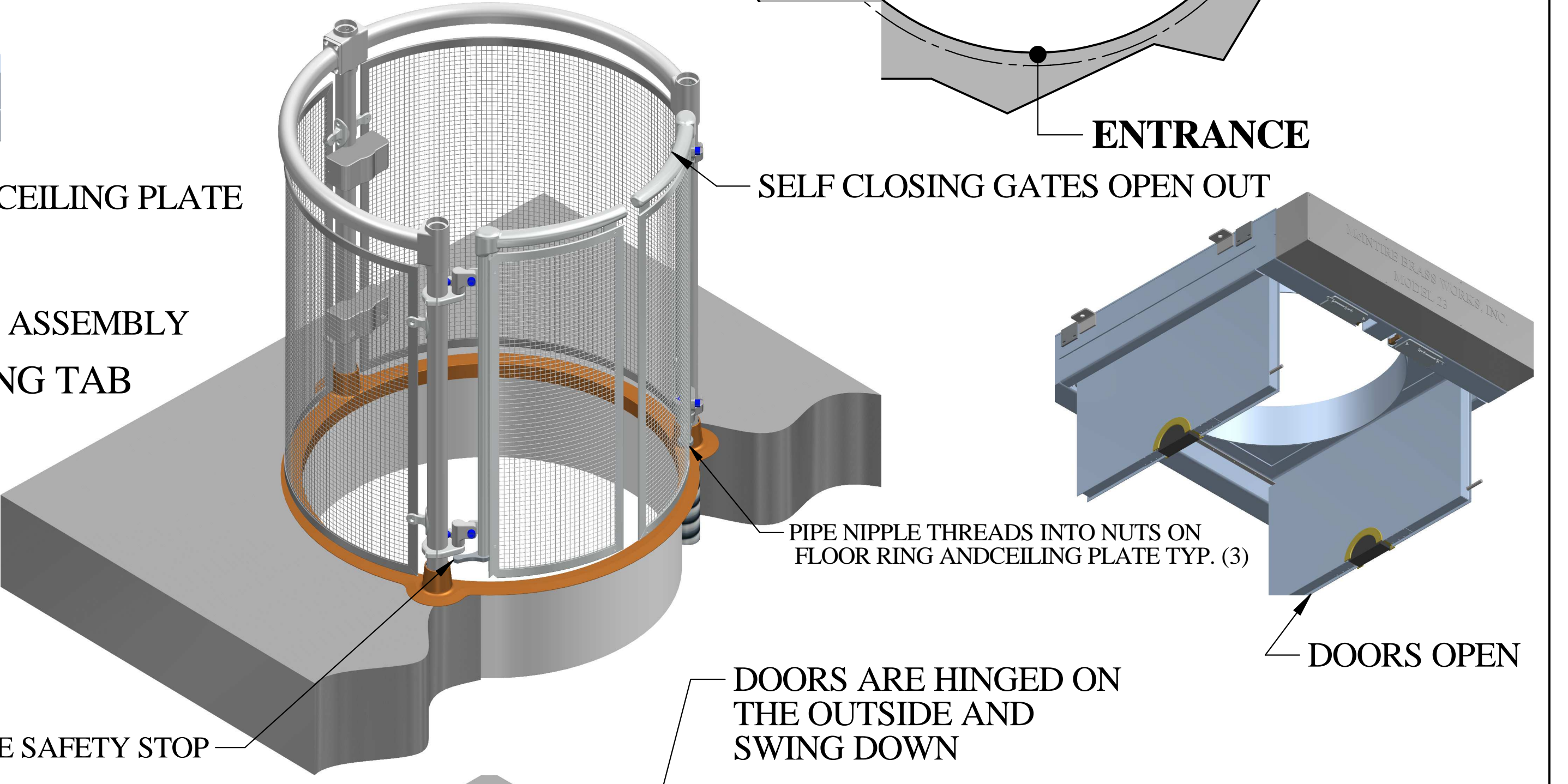
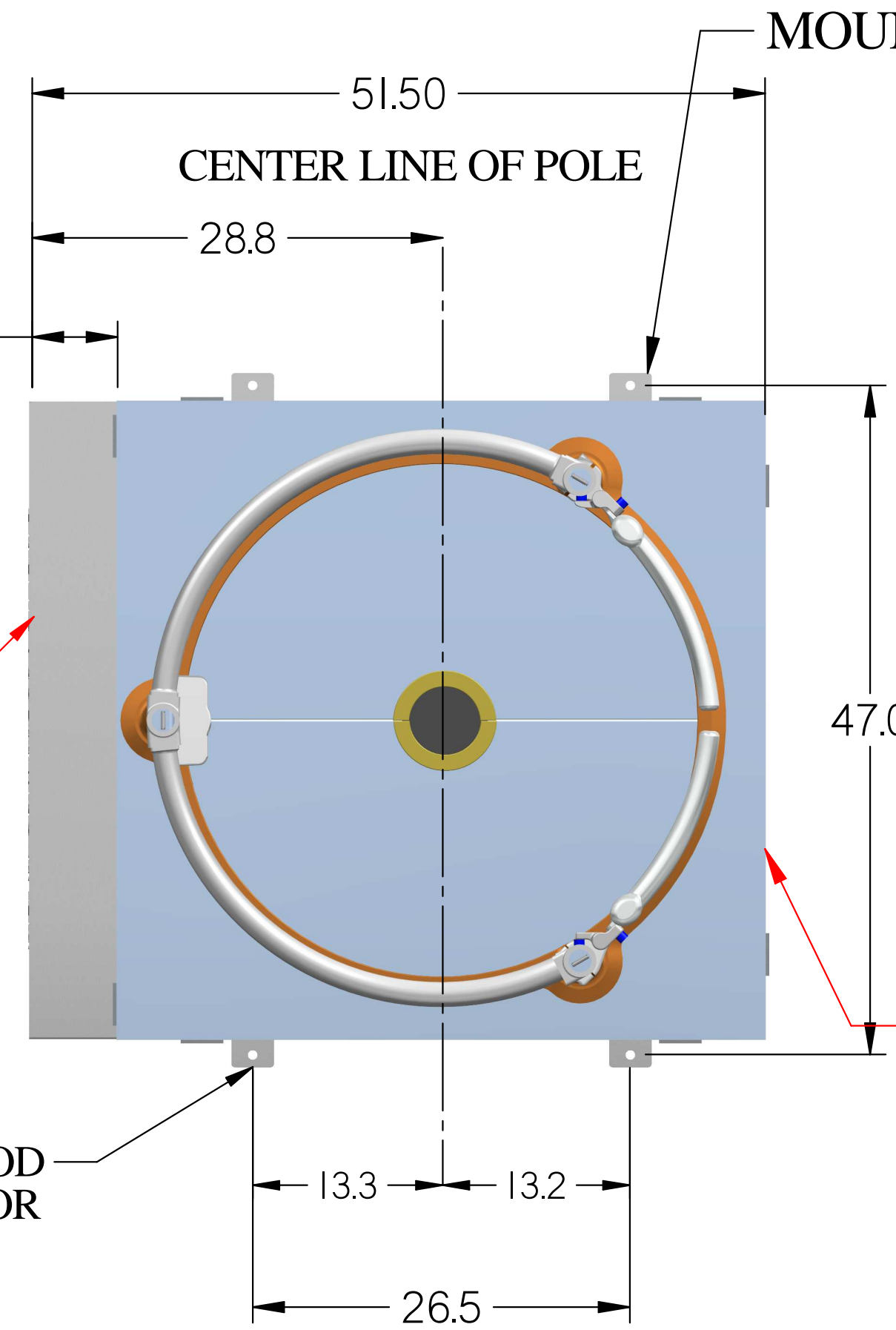
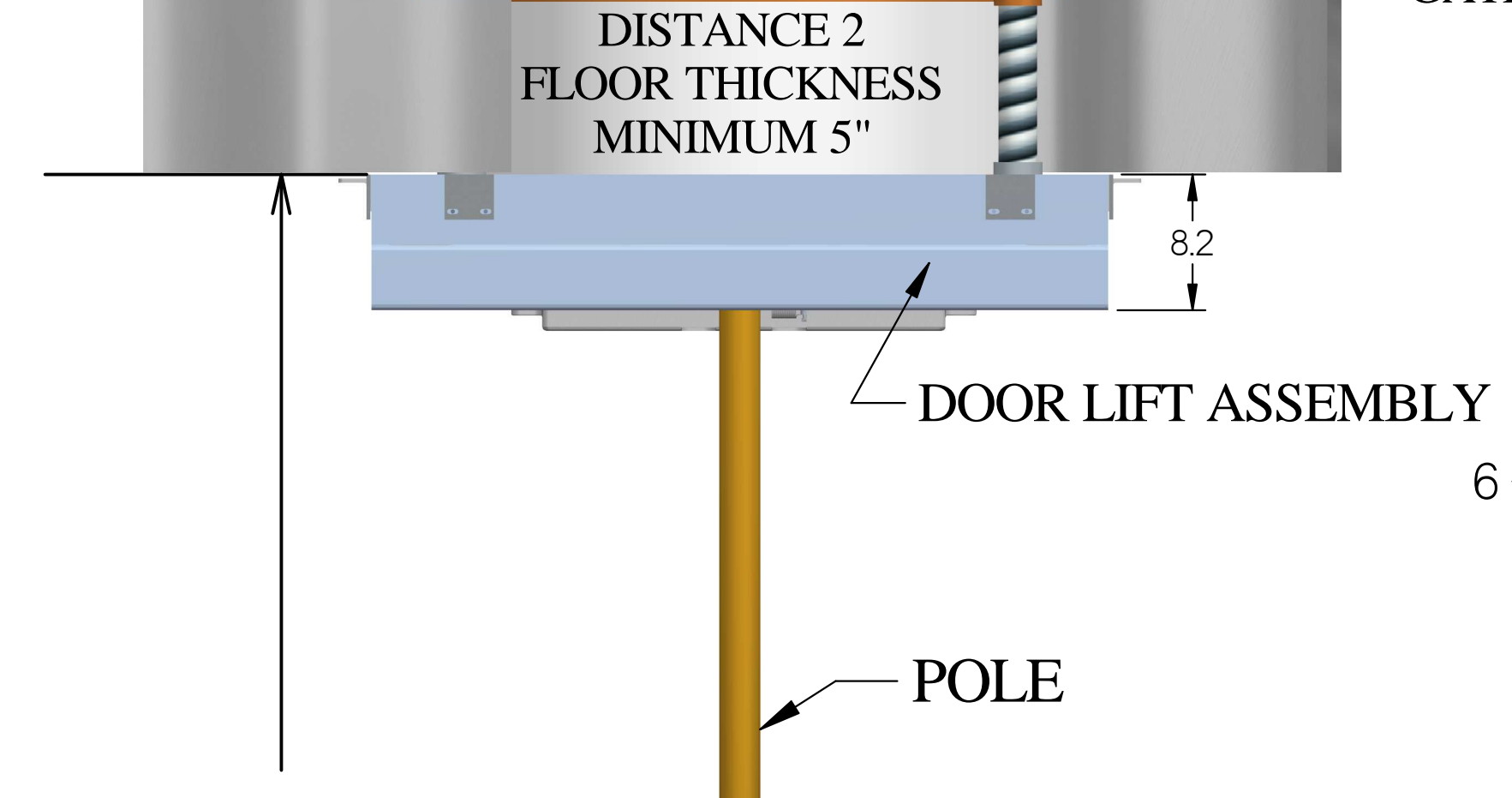
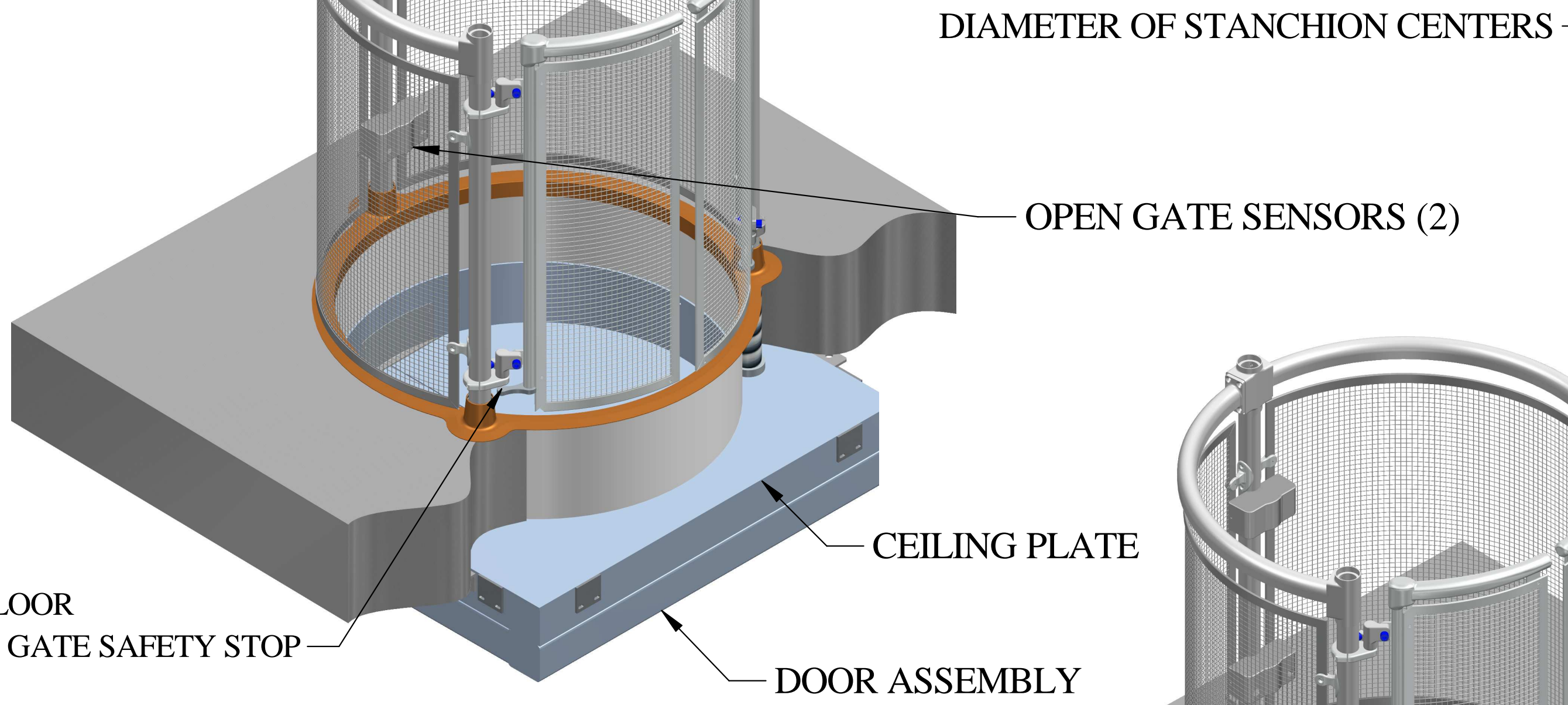
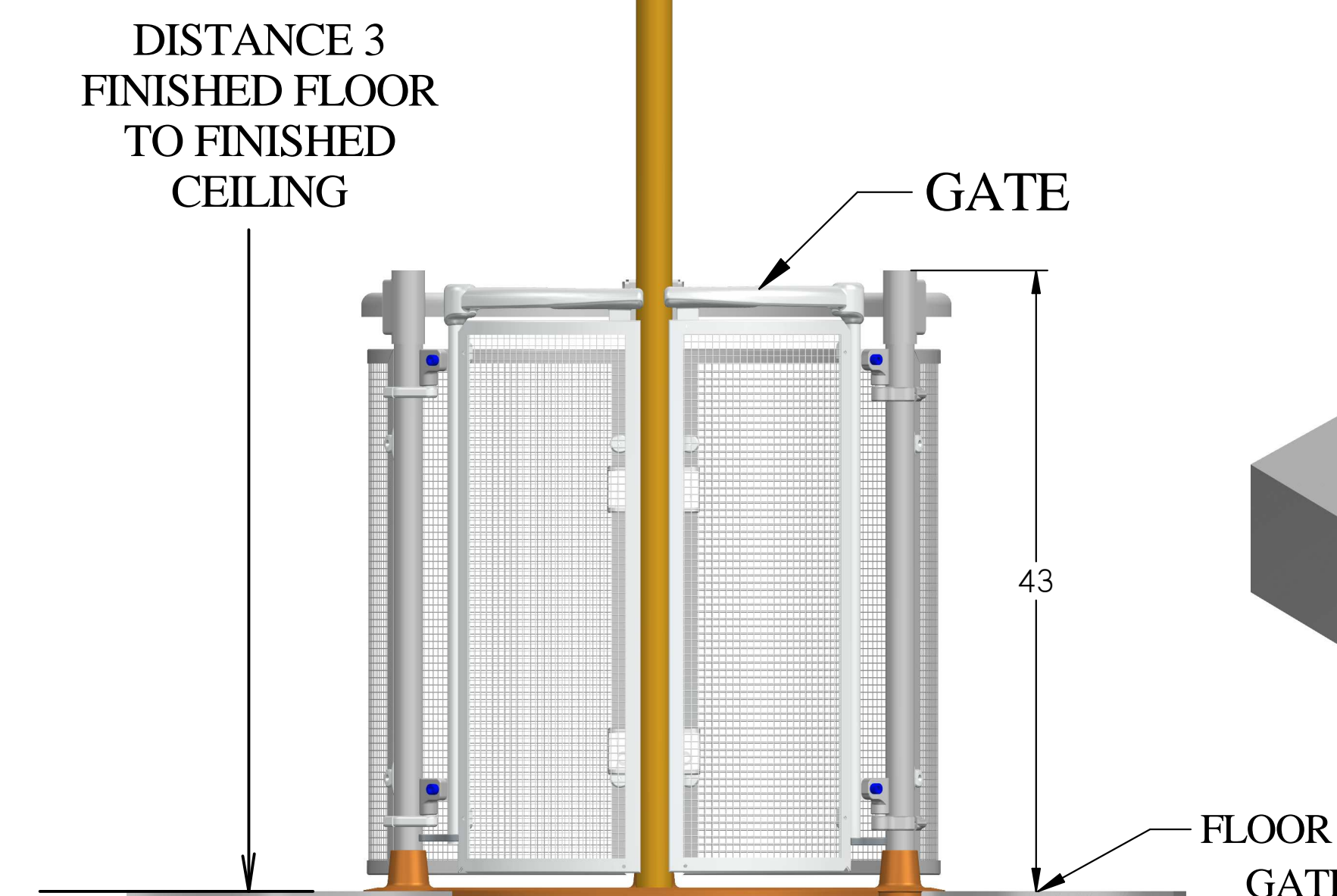
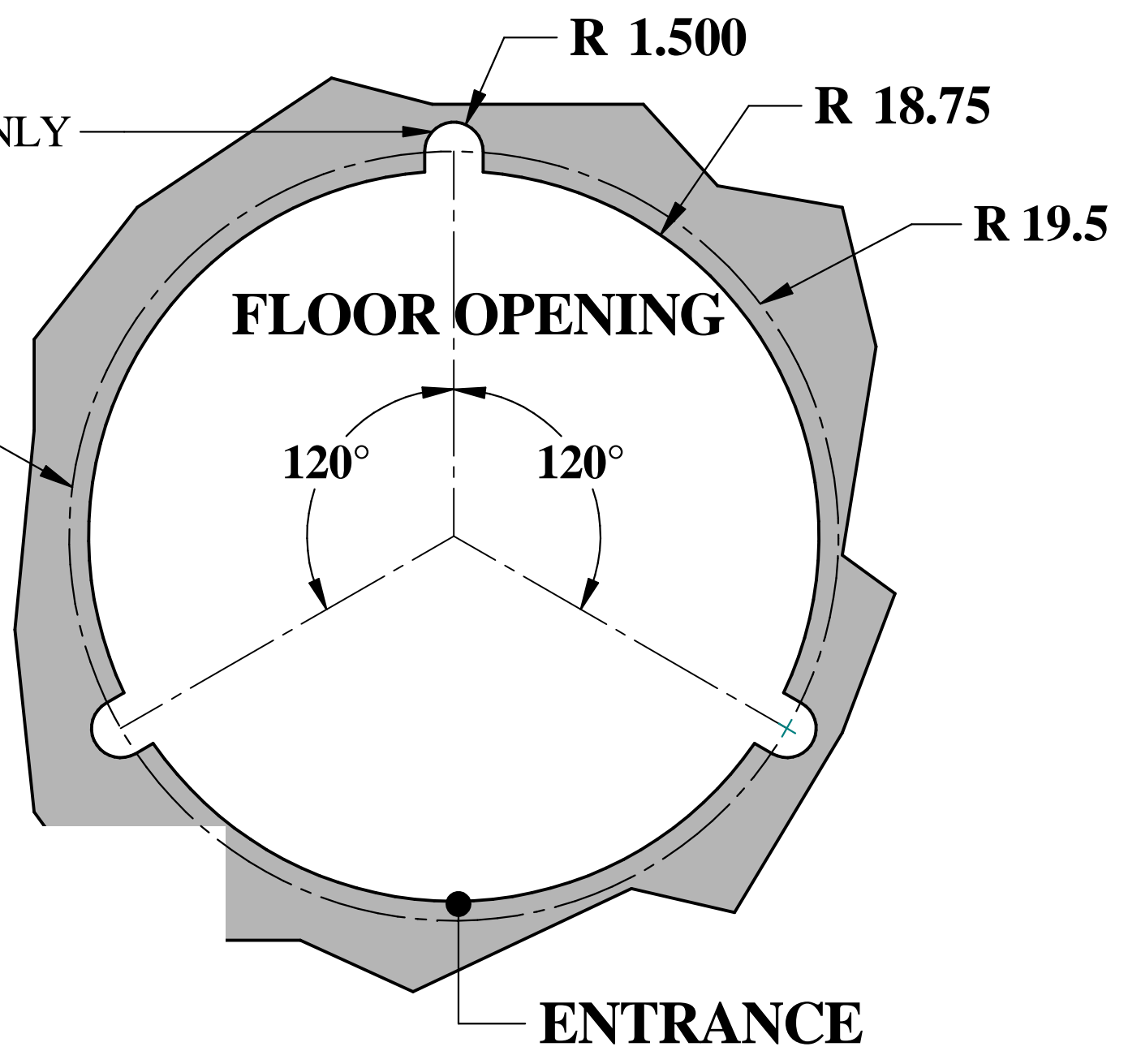
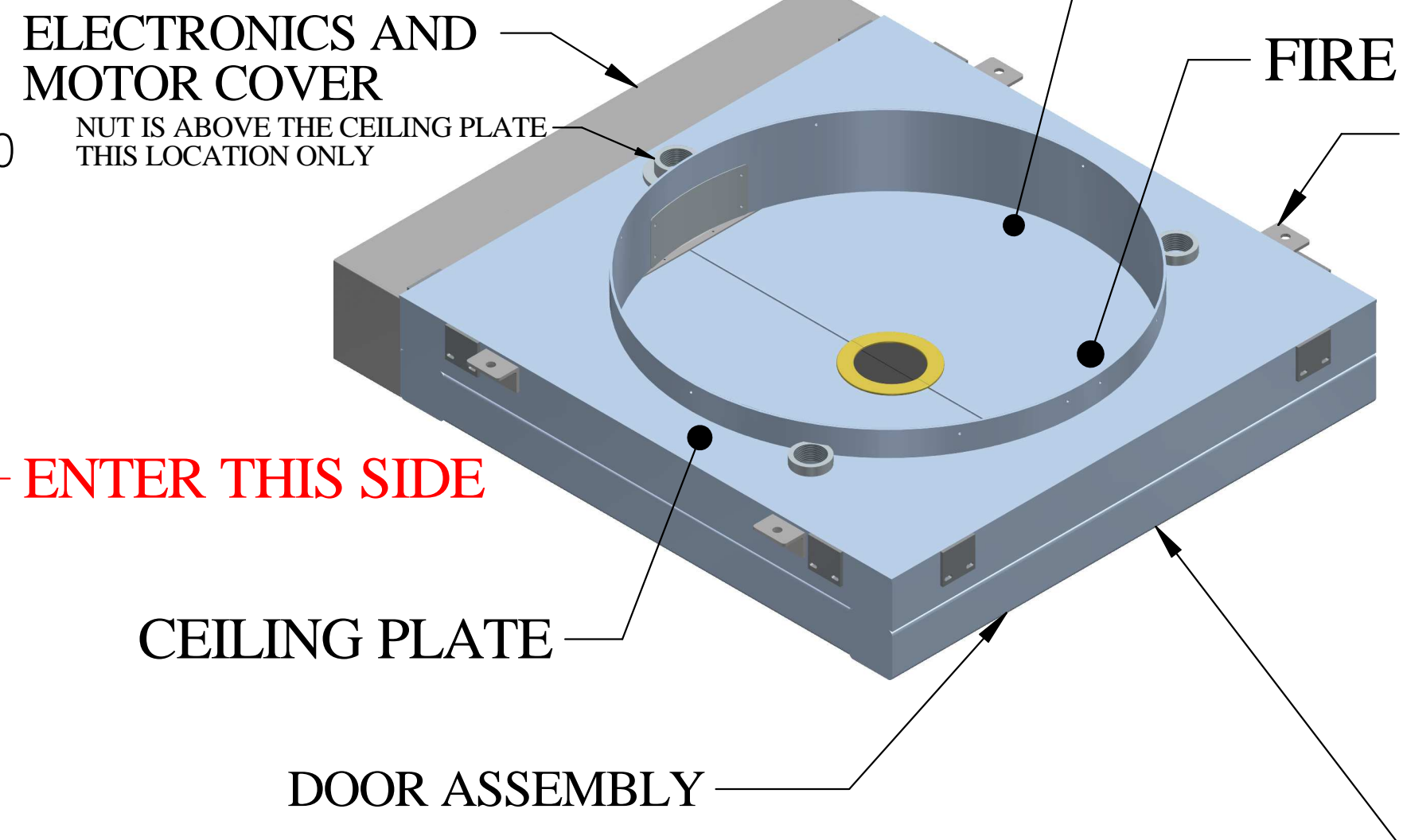


LIGHT AND ON OFF SWITCH
 4.5" .5" DEEP COUNTER BORE ON CEILING THIS CUTOUT ONLY (NECESSARY ONLY IF CEILING PLATE IS FLUSH TO THE UNDER SIDE OF THE CEILING)



ELECTRICAL ENCLOSURE MUST BE ACCESSIBLE 18" MINIMUM CLEARANCE FOR REPAIR



ENTER THIS SIDE

ENTER THIS DIRECTION CUSTOM ORIENTATION AVAILABLE AT EXTRA COST

- NOTES:**
 IT IS IMPORTANT THAT THE CONTRACTOR LOCATE THE POLE OPENING IN ACCORDANCE WITH THE MINIMUM DISTANCES SHOWN ON THE SHEET
- PLAN TO SET THE POLE SO THAT THE ENTRANCE TO THE POLE WILL BE LOCATED BETWEEN ANY TWO OF THE THREE STANCHIONS. LOCATE THE GATE IN THE MOST PRACTICAL POSITION FOR QUICK ACCESS.
 - THE FLOOR MUST BE LEVEL.
 - FOR INSTALLATION INSTRUCTIONS: SEE DETAILED INFORMATION ON SHEET

DRAWN: EBC		DATE: 6/20/23	McIntire Brass Works, Inc.		
APPD:			AUTOMATIC SLIDE POLE MODEL 23 WEBSITE DRAWING		
MATL: NA	FINISH: NA	SCALE: D	DO NOT SCALE	PROJ CODE: Website Drawing Model 23	REV: A
TOLERANCES UNLESS SPECIFIED: X=.02" (0.5MM) XX=.01" (0.25MM) XXX=.005" (0.127MM) ANGLE=±.5°		SCALE: FULL	DWG TYPE: DFT	SHEET 1 OF 1	